

FULL FLOOR  
6,987 SF

**NA**Commercial



2<sup>nd</sup> Floor - 1080 Howe Street | Vancouver, BC

## FOR LEASE

### Downtown Vancouver Executive Place Tower

Opportunity to lease 7,561 SF of fully-improved, premier office space in the heart of downtown Vancouver. Centrally situated at Howe and Helmcken, this building is within close proximity to public transportation, trendy restaurants and is within walking distance to all points on the downtown peninsula.



## 2<sup>nd</sup> Floor - 1080 Howe St

Vancouver, BC

### Highlights

- ▶ Fully-improved space
- ▶ Underground parking
- ▶ Gym, showers, kitchen and common boardroom
- ▶ Double glass door entry to the building
- ▶ Open area with lots of natural light

### Amenities

- ▶ SkyTrain Stations: Vancouver City Centre, Granville, Burrard, Yaletown Roundhouse
- ▶ Area Amenities: Starbucks, Tim Hortons, Scotiabank Theatre, Marketplace IGA, Nesters, Le Crocodile, Staples, Holiday Inn, St. Paul's
- ▶ Building Amenities: Boardroom, gym, shower facilities, bike storage locker, common kitchen.

### Brian Mackenzie

Vice President Leasing & Sales  
604 691 6618  
bmackenzie@naicommercial.ca

### Property Details

#### Size

6,987 SF

#### Base Rent

\$23.00/SF

#### Operating Cost and Property Taxes

\$20.01/SF

#### Parking

10 stalls are available at market rates.

#### Availability

Immediate

# NAI Commercial

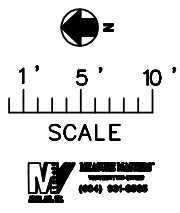
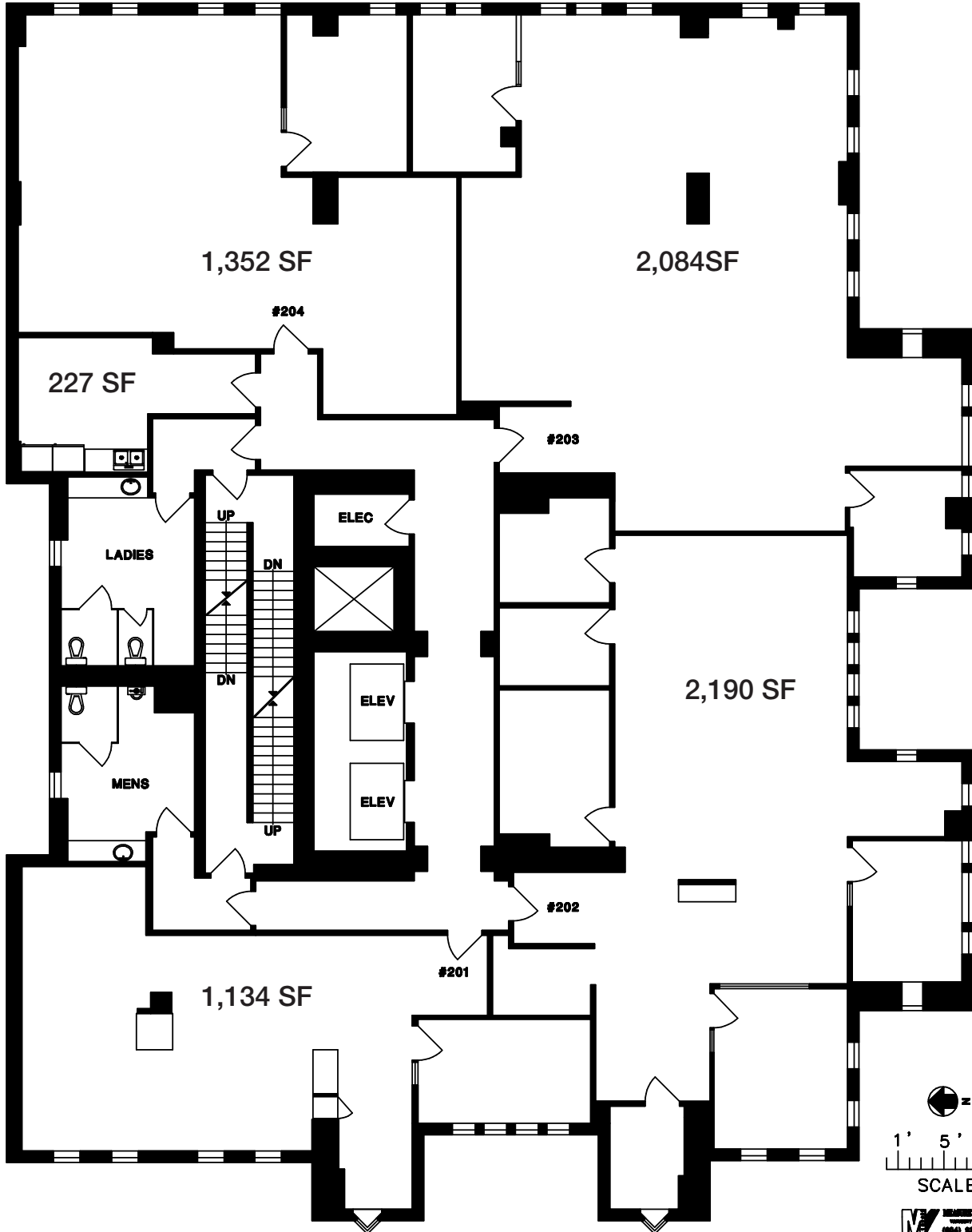
Suite 1300 - 1075 W Georgia St,  
Vancouver, BC V6E 3C9

+1 604 683 7535 | [naicommercial.ca](http://naicommercial.ca)

No warranty or representation, express or implied, is made as to the accuracy of the information contained herein, and the same is submitted subject to errors, omissions, change of price, rental or other conditions, prior sale, lease or financing, or withdrawal without notice, and of any special listing conditions imposed by our principals no warranties or representations are made as to the condition of the property or any hazards contained therein are any to be implied. Aerial image(s) courtesy of Google, Landsat/Copernicus

**1080 HOWE ST.,  
VANCOUVER, B.C.**

**SECOND FLOOR**



**TOTAL RENTABLE AREA 6,987 SF**

**NA Commercial**

