

FOR LEASE
Downtown Vancouver
Executive Place Tower

2,233 SF



Suite 503 - 1080 Howe Street
Vancouver, BC

Opportunity

Opportunity to lease 2,233 SF of fully-improved, premier office space in the heart of downtown Vancouver. Centrally situated at Howe and Helmcken, this building is within close proximity to public transportation, trendy restaurants and is within walking distance to all points on the downtown peninsula.

Brian Mackenzie

Vice President Leasing & Sales
604 691 6618
bmackenzie@naicommercial.ca

NAI Commercial
1075 W Georgia St, Suite 1300
Vancouver, BC V6E 3C9
+1 604 683 7535
naicommercial.ca

Suite 503 - 1080 Howe Street
Vancouver, BC

Size
2,233 SF

Base Rent
\$25/SF

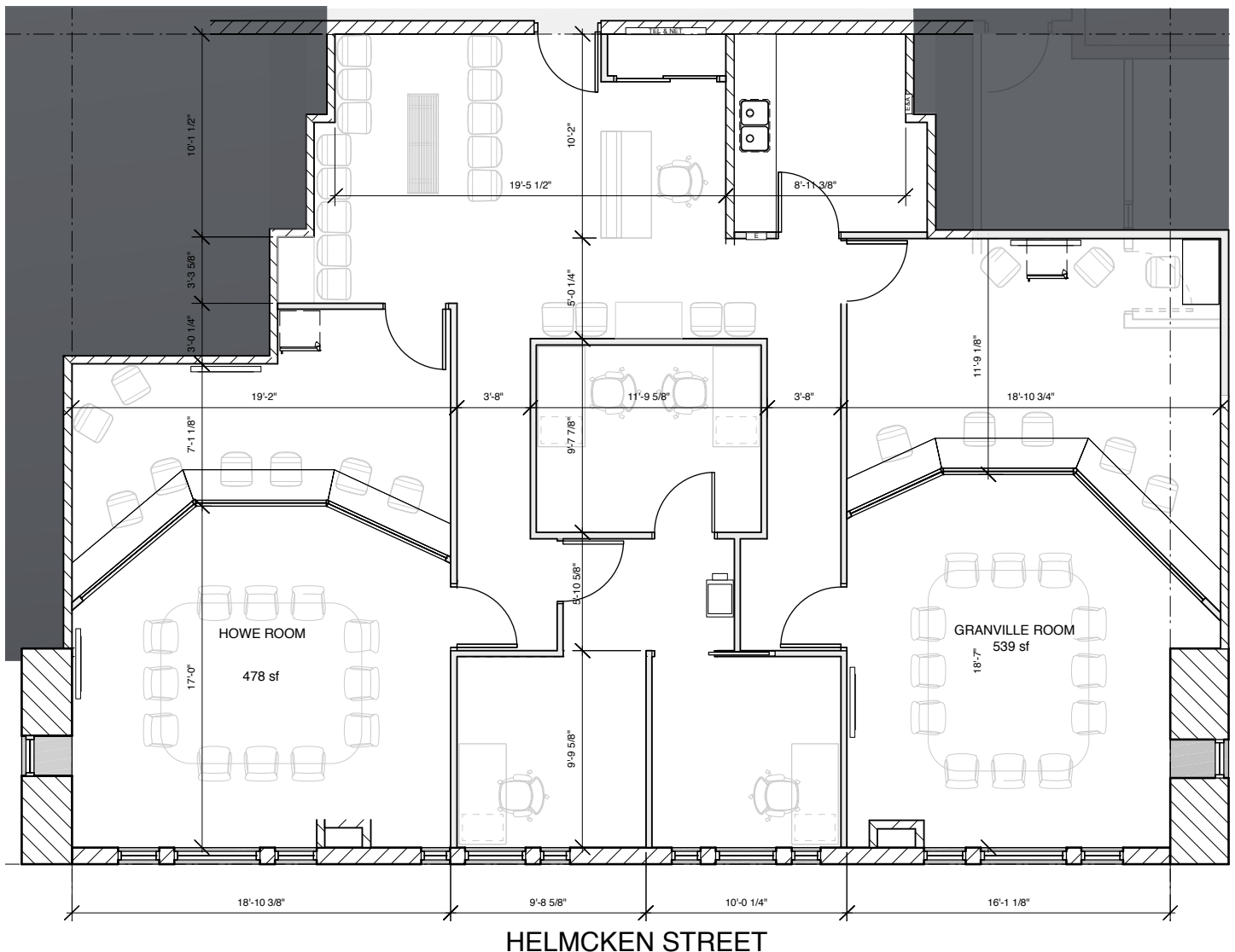
Operating Cost and Property Taxes
\$20.01/SF

Highlights

- ▶ Fully-improved space
- ▶ Underground parking
- ▶ Gym, showers, kitchen and common boardroom
- ▶ Double glass door entry to the building
- ▶ Open area with lots of natural light

Brian Mackenzie
Vice President Leasing & Sales
604 691 6618
bmackenzie@naicommercial.ca

Floor Plan







NAI Commercial

NAI Commercial | 1300-1075 W Georgia St
Vancouver, BC V6E 3C9 | naicommercial.ca

©2021 NAI Commercial (BC) Ltd. All rights reserved.
No warranty or representation, express or implied, is made as to the accuracy of the information contained herein, and the same is submitted subject to errors, omissions, change of price, rental or other conditions, prior sale, lease or financing, or withdrawal without notice, and of any special listing conditions imposed by our principals no warranties or representations are made as to the condition of the property or any hazards contained therein are any to be implied. Aerial image(s) courtesy of Google, Landsat/Copernicus, Autoprop.